



3,585 SQ. FT.,
4 BEDROOMS, 4 FULL 1 HALF BATHS,
TWO STORY/MASTER DOWN



THE CHATHAM



THE CHATHAM B

This elegant two-story home combines functional living areas and sophisticated spaces for entertaining. The spacious first floor owners retreat includes his and her walk-in closets and double vanities. The kitchen is open to the morning room and the keeping room which features a fireplace. The patio doors in the morning room lead to an optional covered porch, which is perfect for indoor and outdoor entertaining. The formal dining room is great for family gatherings and the study with double doors provides a private area within home. The second floor includes three bedrooms, three bathrooms and a loft overlooking the keeping room.

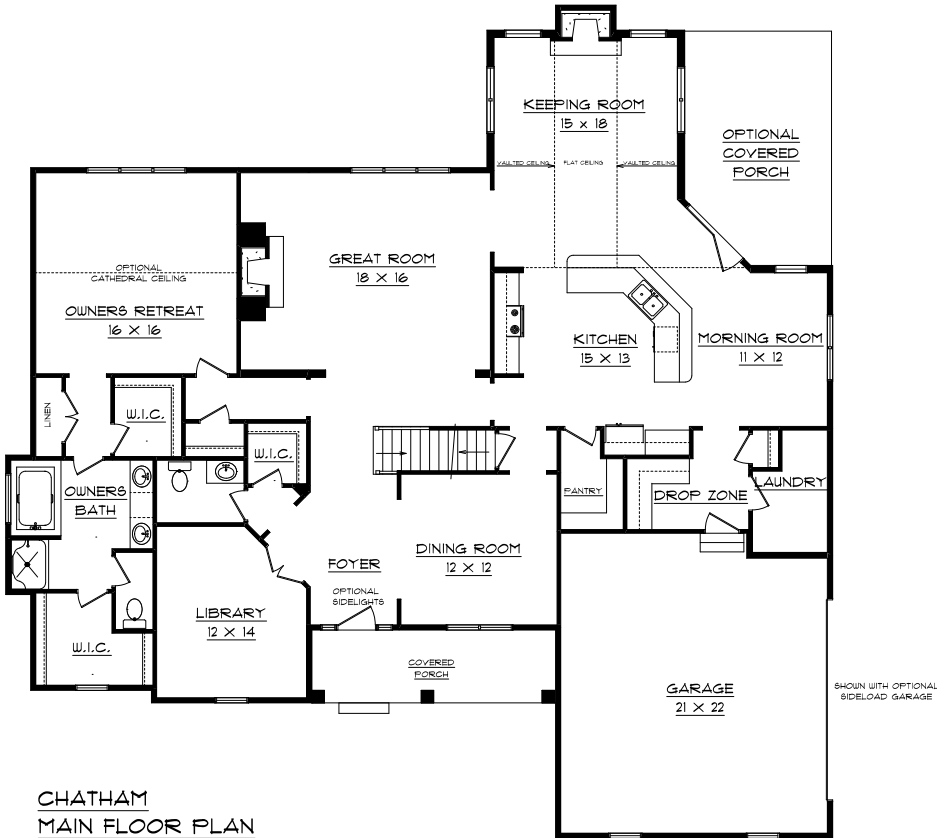
Paul Schumacher
SCHUMACHER HOMES
The Best Value In Custom Homebuilding



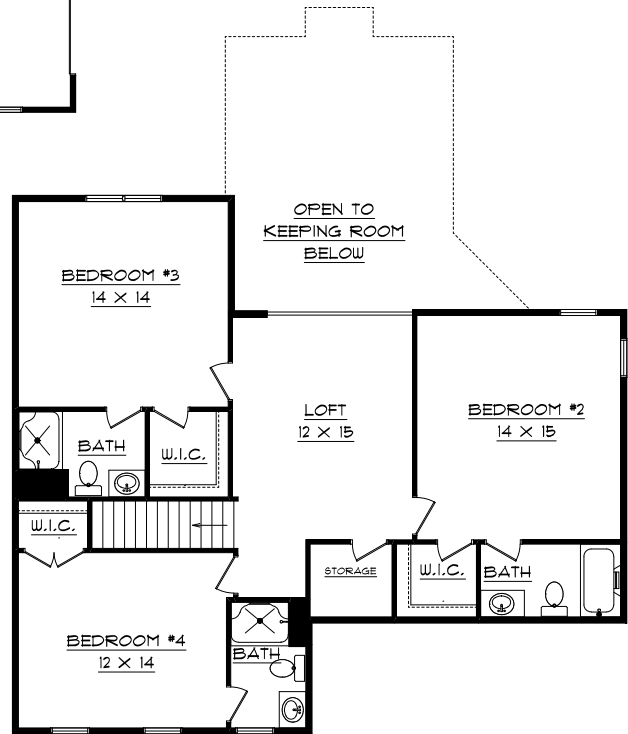
THE CHATHAM A

THE CHATHAM

THE CHATHAM – MAIN FLOOR PLAN



CHATHAM
MAIN FLOOR PLAN



CHATHAM
SECOND FLOOR PLAN

This drawing is for illustration purposes. All dimensions are approximate and designs are subject to field variations. Some windows and floor plans may vary with elevations. Elevations may reflect optional features, such as side-load garage, etc.